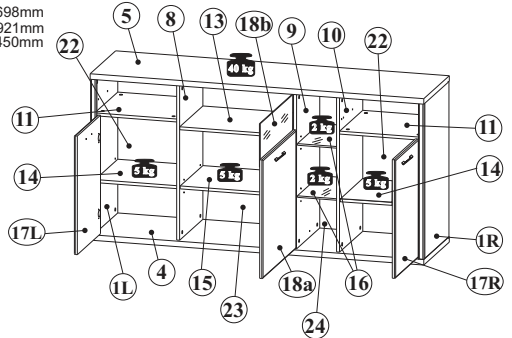
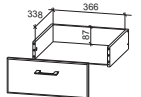
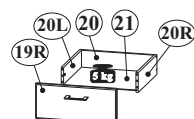
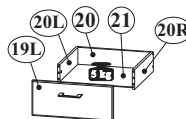
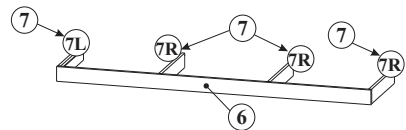


B - 1698mm
 H - 921mm
 T - 450mm



1L+1R	786	448	2	1/2
4	1696	450	1	2/2
5	1696	450	1	2/2
6	1600	74	1	2/2
7	405	74	4	2/2
8	786	410	1	1/2
9	786	410	1	1/2
10	786	410	1	1/2
11	418	409	2	2/2
13	580	400	1	1/2
14	418	400	2	1/2
15	580	400	1	1/2
16	200	395	2	1/2
17L+17R	410	600	2	1/2
18a	592	600	1	2/2
18b	220	573	1	2/2
19L+19R	410	177	2	1/2
20	367	100	2	1/2
20L+20R	352	100	4	1/2
21	378	350	2	2/2
22	795	430	2	2/2
23	795	593	1	2/2
24	795	217	1	2/2



NR 1

- B1** $\varnothing 8 \times 28$ x32
- M1** $\varnothing 15 \times 12 \text{mm}$ x32
- T1** 5x39mm x32
- J23** x22
- P2** 3x20 x9
- G4** L-4,5 $\varnothing 7$ x3
- P16** 4x16 x3
- W1** x12

NR 2

- F33** x13
- P13** $\varnothing 3.5 \times 13$ x68
- F12** x4
- F15** x12
- W13** x8

NR 3

- Q35** L-350mm x2L/2R
- E24** 6.0×11 x4
- E30** 6.3×24 x4
- S3** 3.5×13 x4
- S10** 3.5×25 x4
- P5** 4x30 x8
- S4** 3×16 x4
- M2** $\varnothing 12 \times 10 \text{mm}$ x4
- T2** 5x32mm x4
- DS4** H=12 x8

NR 4

- Y1** $\varnothing 35$ Kr15 x4
- D6** H=2 x6
- E30** 6.3×24 x8
- S8** 4×13 x12
- DS6** x4
- Y2** $\varnothing 35$ Kr8 x2
- E3** 6.3×13 x4

NR 5

- U196** x5
- P4** 4×25 x10
- C14** $\varnothing 20 \text{mm}$ x14
- C142** $\varnothing 20 \text{mm}$ x4

NR 6

- O20** x1
- O21** MAX 6 W x1

NR 7

- J11** x2
- P13** $\varnothing 3.5 \times 13$ x4

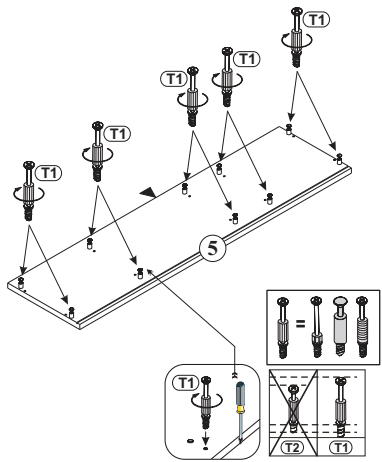
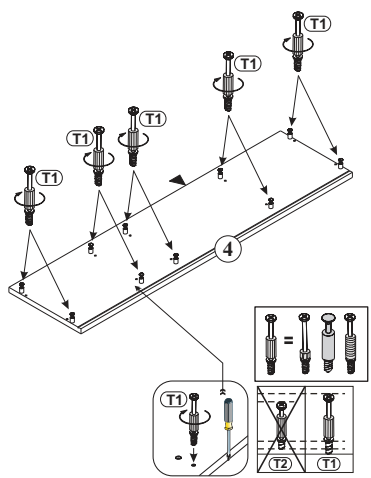
C 1/2



PL - Produkt je zaverjenj izobila sestava, kiore se vnapiljo na svoje vnaolico nie podlegajo toporozporeditvi (UEI 2019/2015)	DE Diese Produkt enthalten Lichtquellen, die aufgrund ihrer Eigenschaften nicht unter die Verordnung (EU) 2019/2015 fallen	CS Tyto výrobky obsahují světelné zdroje, které vzhledem ke svým vlastnostem nepodléhají do oblasti působnosti nariadení (EÚ) 2019/2015
DA - Disse produkter indeholder lyskilder, som på grund af deres egenskaber er uden for anvendelsesområdet for forordningen (EU) 2019/2015	EN - Are not to replace light sources which, due to their properties, are out of the scope of Regulation (EU) 2019/2015	EM - These products contain light sources which, due to their properties, are out of the scope of Regulation (EU) 2019/2015
ES - Estes productos contienen fuentes de luz que, por sus propiedades, quedan fuera del ámbito de aplicación del Reglamento (UE) 2019/2015.	ET - Need tootet sisaldavad valgusallikaid, mis on omaduste tõttu väljaspool määratluse (EÜ) 2019/2015 reguleerimisalast välja	FI - Näinä tuotteet sisältävät valonläitä, jotka ominaisuuksiensa vuoksi eivät kuulu asetuksen (EU) 2019/2015 soveltamisalaa
FR - Ces produits contiennent des sources lumineuses qui, en raison de leurs propriétés, n'entrent pas dans le champ d'application du règlement (UE) 2019/2015	HU - Ezek a termékek olyan fényforrások tartalmazzak, amelyek tulajdonságai miatt nem tartoznak az (EU) 2019/2015 rendelet hatálya alá	IT - Questi prodotti contengono sorgenti luminose che, per le loro proprietà, esulano dal campo di applicazione del regolamento (UE) 2019/2015
LT - Šiosse gamtiniose yra šviesos šaltiniai, kurie dėl savo savybių nepatenka į Reglamentu (EU) 2019/2015 taikymo sritį	LV - Šie produkti satur gaismas avotus, kas to īpašību dēļ ir ārpus Regulas (Ei) 2019/2015 darbības jomas	RU - Эти продукты содержат источники света, которые не являются объектами регулирования настоящих Регламентов (ЕС) 2019/2015.
PT - Estes produtos contêm fontes de luz que, devido às suas propriedades, estão fora do âmbito do Regulamento (UE) 2019/2015	NO - Access produsse contain lysrør de lumini care, datorită proprietăților lor, nu snt în domeniul de aplicare al Regulamentului (UE) 2019/2015	NL - Deze producten bevatten lichtbronnen die vanwege hun eigenschappen buiten het toepassingsgebied van Verordening (EU) 2019/2015 vallen
SK - Tieto výrobky obsahujú svetelné zdroje, ktoré vzhľadom na svoje vlastnosti nepatria do rozsahu pôsobnosti nariadenia (EÚ) 2019/2015	SL - Ti izdelki vsebujejo svetlobne vire, ki zaradi svojih lastnosti ne spadajo na področje uporabe Uredbe (EU) 2019/2015	SV - Dessa produkter innehåller ljuskällor som på grund av sina egenskaper inte omfattas av förordning (EU) 2019/2015
TR - Bu ürünler, özellikleri nedeniyle (UE) 2019/2015 Kurulmeğinin kapsamı dışında kalan ışık kaynakları içerir.	HR - Ovi proizvodi sadrže izvorne svjetlosti koji zbog svojih osobina nisu obuhvaćeni Uredbom (EU) 2019/2015	BG - Тези продукти съдържат източници на светлина, които поради своите свойства не са обхвaтени на Регламент (ЕС) 2019/2015

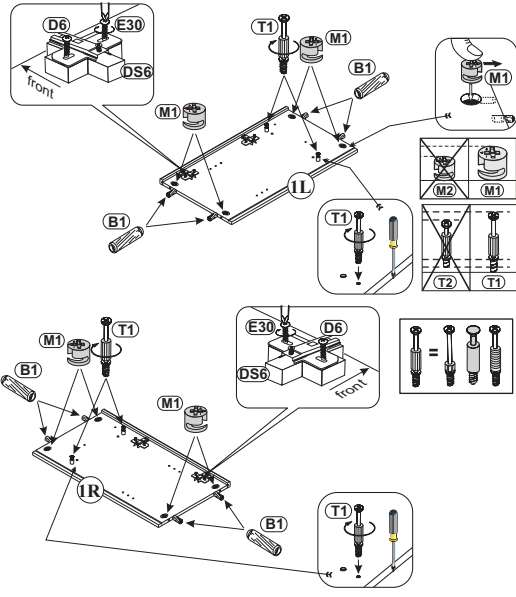
1 5x39mm x10

2 5x39mm x10



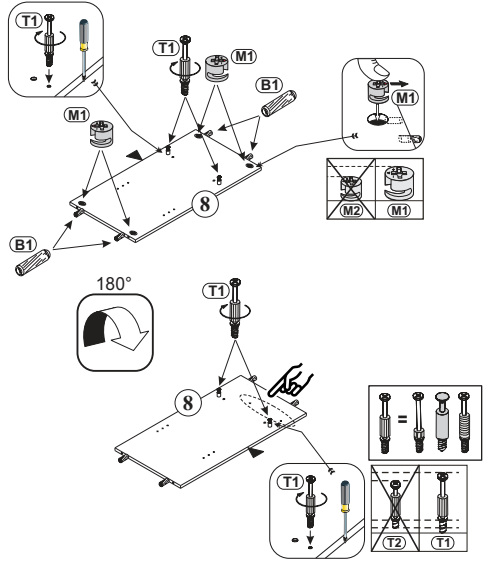
3

- B1** ϕ 8x28 X8
- DS6** X4
- E30** 6.3 x 24 X8
- M1** ϕ 15x12mm X8
- D6** H2 X4
- T1** 5x39mm X4



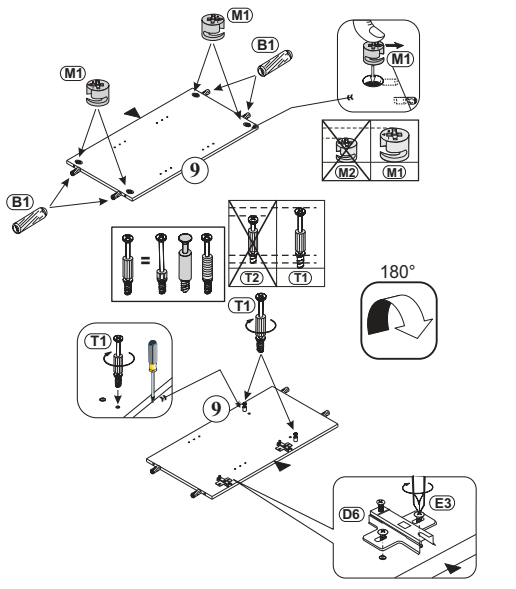
4

- T1** 5x39mm X4
- B1** ϕ 8x28 X4
- M1** ϕ 15x12mm X4



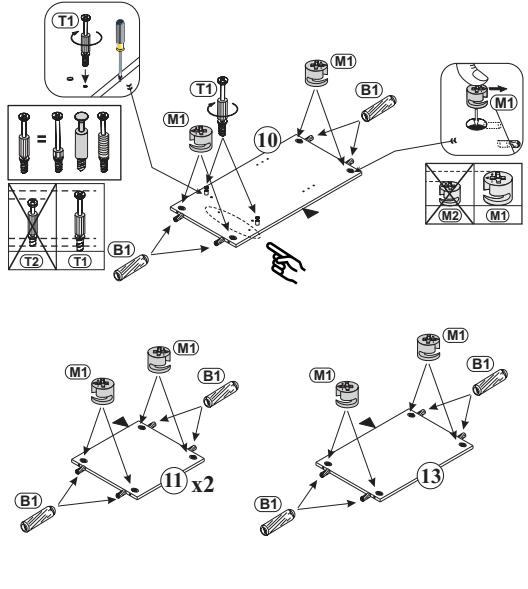
5

- B1** ϕ 8x28 X4
- D6** H2 X2
- T1** 5x39mm X2
- M1** ϕ 15x12mm X4
- E3** 6.3 x 13 X4

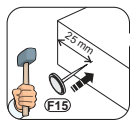
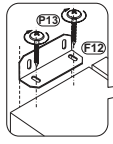
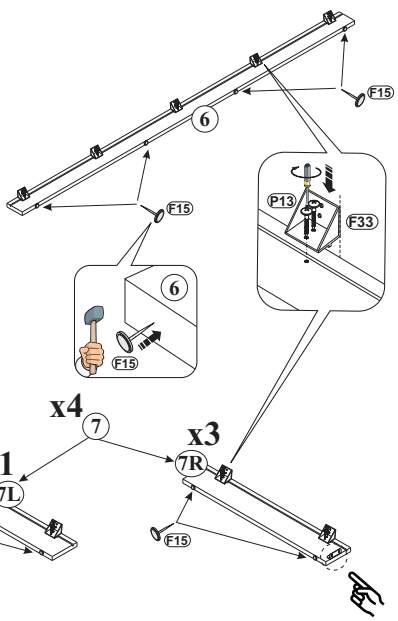
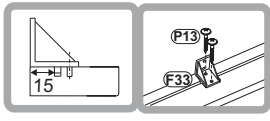
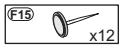
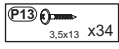
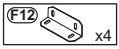
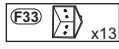


6

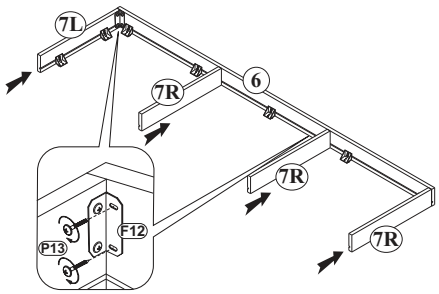
- T1** 5x39mm X2
- B1** ϕ 8x28 X16
- M1** ϕ 15x12mm X16



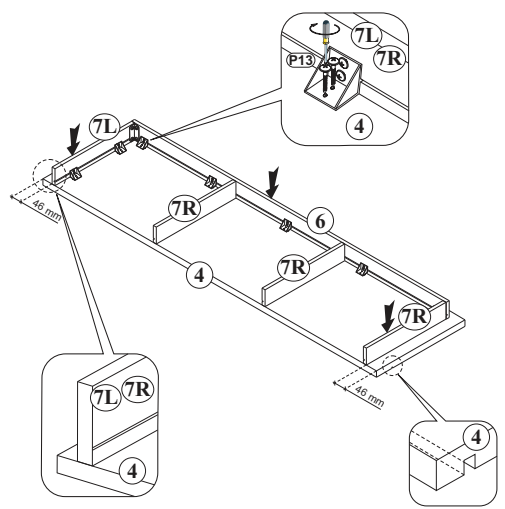
7



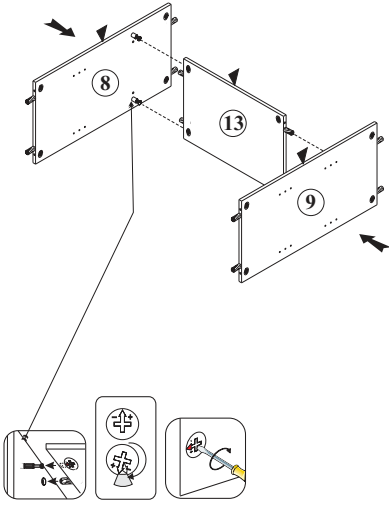
8



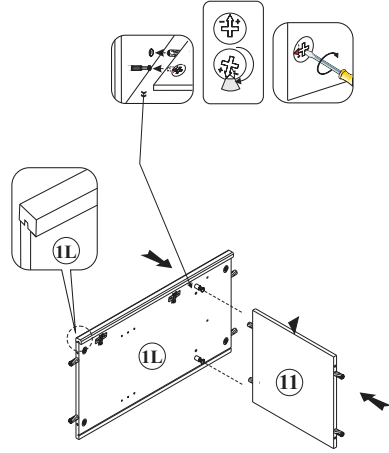
9



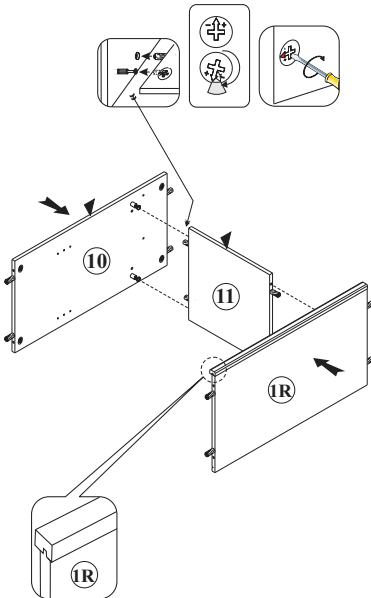
10



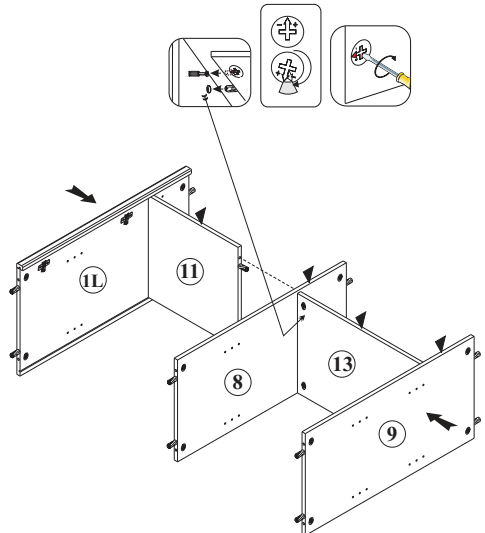
11



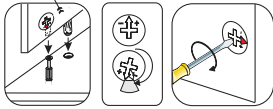
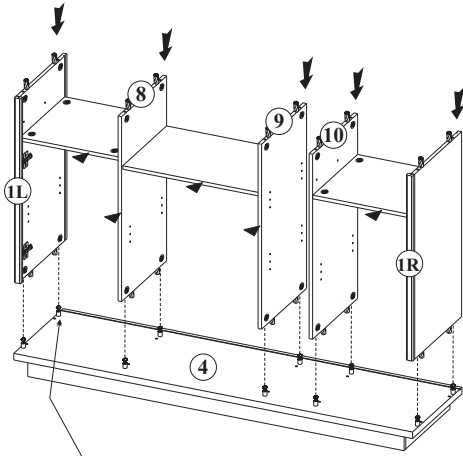
12



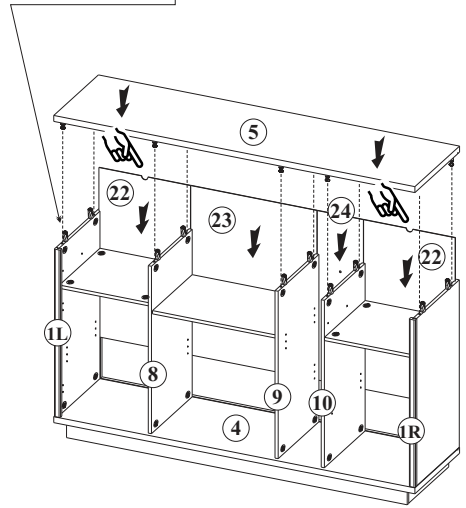
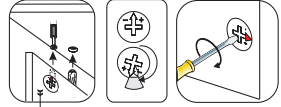
13



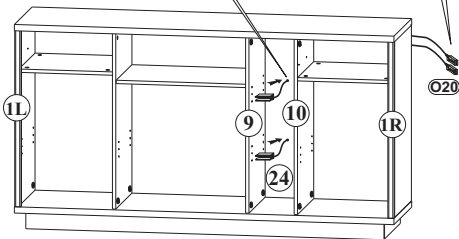
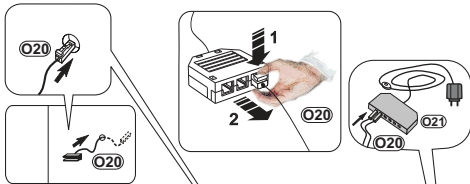
14



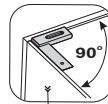
15



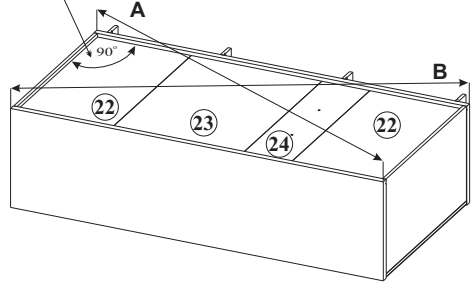
16



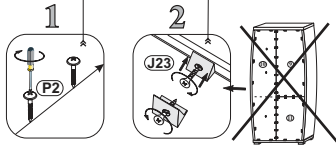
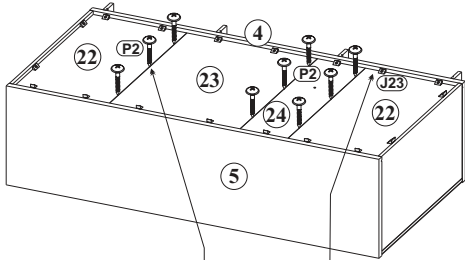
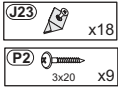
17



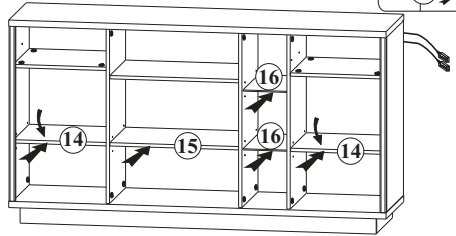
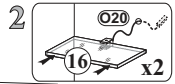
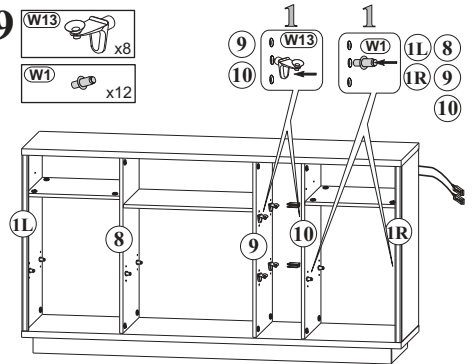
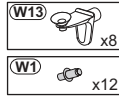
A=B ☺ ✓



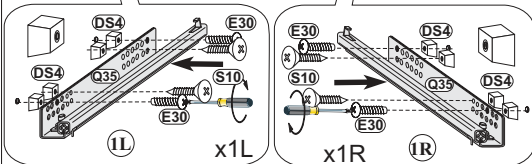
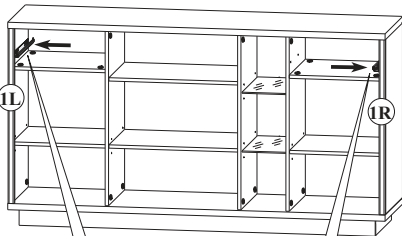
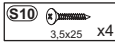
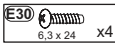
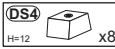
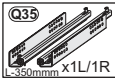
18



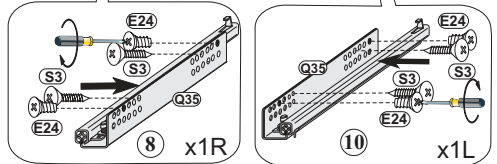
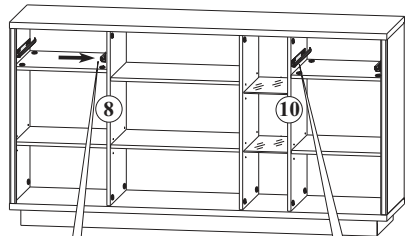
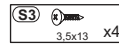
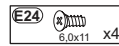
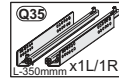
19



20



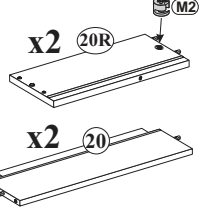
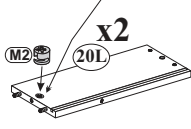
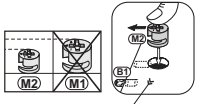
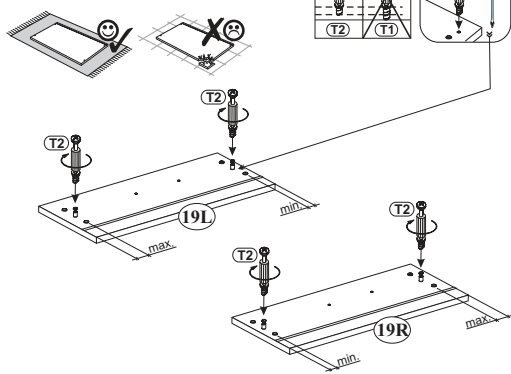
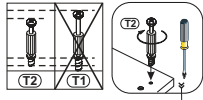
21



22

M2 $\phi 12 \times 10 \text{mm}$ x4

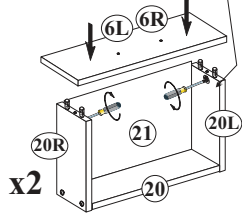
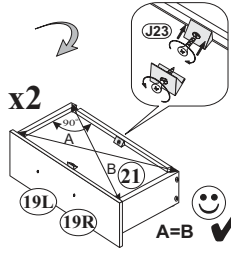
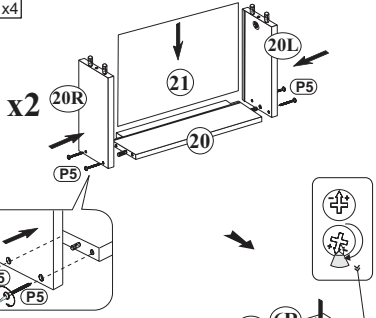
T2 $5 \times 32 \text{mm}$ x4



23

P5 4×30 x8

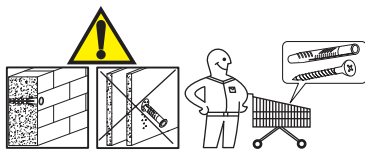
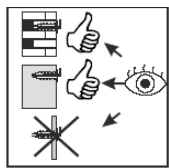
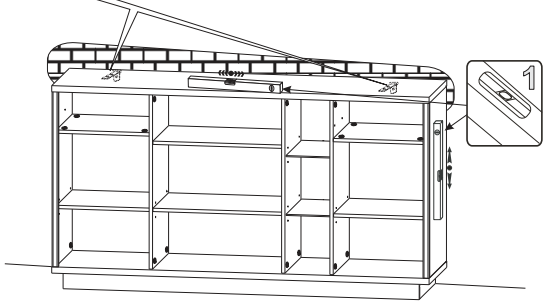
J23 x4



24

J11 x2

P13 3.5×13 x4



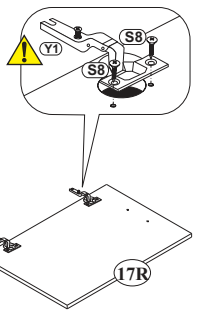
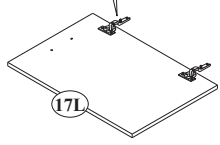
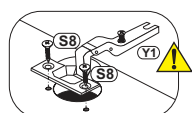
25

Y1 $\phi 35$ Kr15 x4

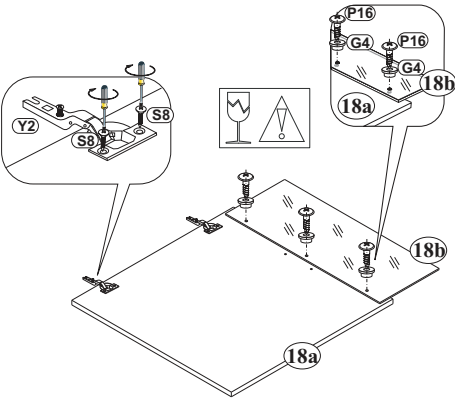
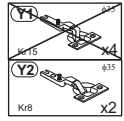
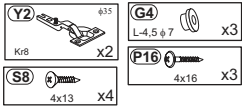
S8 4×13 x8

Y1 $\phi 35$ Kr15 x4

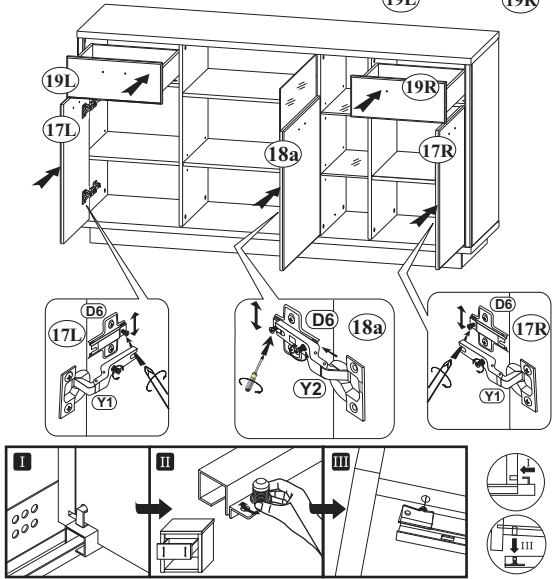
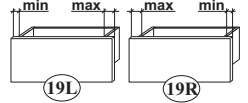
Y2 $\phi 8$ x2



26



27



28

